



FOR INDUSTRY PROFESSIONALS



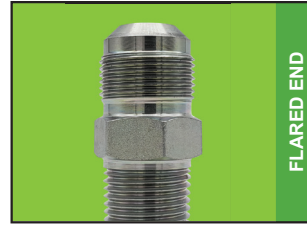
GAS CONNECTORS

Features and Benefits



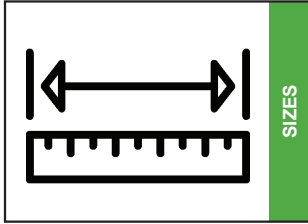
304 STAINLESS STEEL

Gas Connectors are composed of corrosion-resistant 304 stainless steel, providing extra strength while maintaining flexibility.



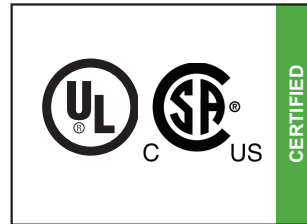
FLARED END

Gas Connectors come with a flared-end fitting for secure metal-to-metal sealing.



SIZES

Gas Connectors come in a large variety of sizes and lengths.

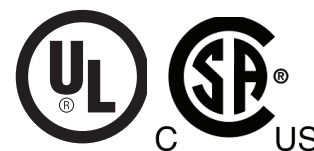


CERTIFIED

Valves are UL and CSA listed for use with natural gas and liquefied petroleum (LP), and connectors are CSA listed. Gas Connectors are used for ease of installation and proper appliance alignment.

	TRADEPRO	LENGTH	OD	ID	FITTING SIZE 1	FITTING TYPE 1	FITTING SIZE 2	FITTING TYPE 2	VALVE	CARTON QTY	UOM
GAS CONNECTORS	TP-GC-581212MF-12	12"	5/8"	1/2"	1/2"	MIP	1/2"	FIP	N/A	25 pcs	EA
	TP-GC-581212MF-18	18"	5/8"	1/2"	1/2"	MIP	1/2"	FIP	N/A	25 pcs	EA
	TP-GC-581212MF-24	24"	5/8"	1/2"	1/2"	MIP	1/2"	FIP	N/A	25 pcs	EA
	TP-GC-581212MF-36	36"	5/8"	1/2"	1/2"	MIP	1/2"	FIP	N/A	25 pcs	EA
	TP-GC-581212MF-48	48"	5/8"	1/2"	1/2"	MIP	1/2"	FIP	N/A	25 pcs	EA
	TP-GC-581212MM-18	18"	5/8"	1/2"	1/2"	MIP	1/2"	MIP	N/A	25 pcs	EA
	TP-GC-581212MM-24	24"	5/8"	1/2"	1/2"	MIP	1/2"	MIP	N/A	25 pcs	EA
	TP-GC-581212MM-36	36"	5/8"	1/2"	1/2"	MIP	1/2"	MIP	N/A	25 pcs	EA
	TP-GC-581212MM-48	48"	5/8"	1/2"	1/2"	MIP	1/2"	MIP	N/A	25 pcs	EA
	TP-GC-581212MM-60	60"	5/8"	1/2"	1/2"	MIP	1/2"	MIP	N/A	25 pcs	EA
	TP-GC-103434MM-18	18"	1"	3/4"	3/4"	MIP	3/4"	MIP	N/A	25 pcs	EA
GAS CONNECTORS WITH VALVES	TP-GC-121212MF-24V	24"	1/2"	3/8"	1/2"	MIP	1/2"	FIP	VALVE	25 pcs	EA
	TP-GC-121212MF-36V	36"	1/2"	3/8"	1/2"	MIP	1/2"	FIP	VALVE	25 pcs	EA
	TP-GC-581212MF-18V	18"	5/8"	1/2"	1/2"	MIP	1/2"	FIP	VALVE	25 pcs	EA
	TP-GC-581212MF-24V	24"	5/8"	1/2"	1/2"	MIP	1/2"	FIP	VALVE	25 pcs	EA
	TP-GC-581212MF-36V	36"	5/8"	1/2"	1/2"	MIP	1/2"	FIP	VALVE	25 pcs	EA
	TP-CG-581234MF-24V	24"	5/8"	1/2"	1/2"	MIP	3/4"	FIP	VALVE	25 pcs	EA
	TP-GC-581234MF-30V	30"	5/8"	1/2"	1/2"	MIP	3/4"	FIP	VALVE	25 pcs	EA
	TP-GC-581234MF-36V	36"	5/8"	1/2"	1/2"	MIP	3/4"	FIP	VALVE	25 pcs	EA
GAS KIT	TP-GC-KIT-18	18"	5/8"	1/2"	1/2"	MIP	1/2"	MIP	VALVE	10 Kits	Kit
	TP-GC-KIT-24	24"	5/8"	1/2"	1/2"	MIP	1/2"	MIP	VALVE	10 Kits	Kit
	TP-GC-KIT-36	36"	5/8"	1/2"	1/2"	MIP	1/2"	MIP	VALVE	10 Kits	Kit
SHUT-OFF VALVES	TRADEPRO	DESCRIPTION							BOX QTY	CARTON QTY	
	TP-GC-1212FF-V	1/2" FIP x 1/2" FIP Gas Shut Off Valve							10 pcs	100 pcs	Box
	TP-GC-3434FF-V	3/4" FIP x 3/4" FIP Gas Shut Off Valve							10 pcs	100 pcs	Box

APPLIANCE CONNECTORS WITH FITTINGS



INSTALLATION & USER INSTRUCTIONS
 DESIGN CERTIFIED FOR INDOOR AND OUTDOOR USE
 MODEL NO. C-GC AND C-GCY SERIES (1", 5/8", 1/2", 3/8" O.D.)

DESIGN COMPLIES WITH THE FOLLOWING STANDARDS:

- ANSI Z21.24 CSA/CGA 6.10 standard
Connectors for Gas Appliances
- ANSI Z21.75 CSA/CGA 6.27 standard
Connectors for Outdoor Gas Appliances & Manufactured Homes

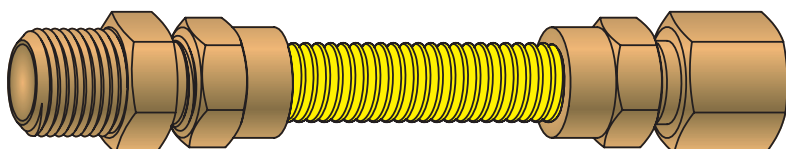
Connectors are for ease of installation and proper alignment of fixed on piping system appliances using natural or liquefied petroleum (LP) gases at pressures not to exceed 1/2 psi(3.5kPa). Improper use must be avoided.

Gas connector may be used to connect appliances inside park trailers (ANSI A119.5) and inside manufactured homes (ANSI 223.1) having a total appliance rating or section rating not in excess of the following:

**REFERENCE
NUMBER
KEY**



EXAMPLE: **TP-GCY-581234MF-12**



Coating

Y: Yellow
 B: Black

O.D.

10: 1" (3/4" ID)
 58: 5/8" (1/2" ID)
 12: 1/2" (3/8" ID)
 38: 3/8" (1/4" ID)

FITTING SIZE

10: 1"
 34: 3/4"
 12: 1/2"
 38: 3/8"

FITTING TYPE

M: MIP
 F: FIP

LENGTH

12"
 18"
 24"
 30"
 36"
 48"
 60"
 72"

GAS BTU RATING	Straight Length Capacity-Btu Per Hr using:0.64Sp Gr, 1000 Btu Per Cu Ft(37.5MJ Per Cu Meter) Gas at 0.5 inch Water Column(124 Pa) Pressure Drop. The capacity at 50 Pa (0.2 inch water column) pressure drop can be determined by multiplying the BTU per hr. listed in the table below by 0.632							
	12"	18"	24"	30"	36"	48"	60"	72"
1" OD (3/4" ID)			290,000	270,500	255,900	215,000	197,400	173,900
5/8" OD (1/2" ID)	180,000	164,200	150,000	136,000	125,000	106,000	93,200	86,000
1/2" OD (3/8" ID)	102,000	93,100	85,000	77,100	71,100	60,500	53,200	49,100
3/8" OD (1/4" ID)	48,000	43,600	40,000	36,400	33,400	28,300	24,900	23,100



FOR INDUSTRY PROFESSIONALS

GAS CONNECTOR CROSS REFERENCE GUIDE

Why Sell TradePro Gas Connectors

Trade Pro Gas Connectors are easy to install and provide a secure connection to kitchen appliances, dryers, and water heaters.

Trade Pro Gas Connectors are ideal for both indoor and outdoor use.

SHUT-OFF VALVES		TRADEPRO		CAMBRIDGE		DORMONT		DIVERSITECH		CROWN INDUSTRIES	
LENGTH	OD	TRADEPRO	CAMBRIDGE	DORMONT	DIVERSITECH	CROWN INDUSTRIES					
12"	5/8"	TP-GC-581212MF-12	C-GC-581212MF-12	30-3132-12	30-3132-12	G512B					
18"	5/8"	TP-GC-581212MF-18	C-GC-581212MF-18	30-3132-18	D30-3132-18	G518B					
24"	5/8"	TP-GC-581212MF-24	C-GC-581212MF-24	30-3132-24	D30-3132-24	G524B					
36"	5/8"	TP-GC-581212MF-36	C-GC-581212MF-36	30-3132-36	D30-3132-36	G536B					
48"	5/8"	TP-GC-581212MF-48	C-GC-581212MF-48	30-3132-48	D30-3132-48	G548B					
18"	5/8"	TP-GC-581212MM-18	C-GC-581212MM-18	30-3131-18		G518A					
24"	5/8"	TP-GC-581212MM-24	C-GC-581212MM-24	30-3131-24	D-30-3131-24	G524A					
36"	5/8"	TP-GC-581212MM-36	C-GC-581212MM-36	30-3131-36	D-30-3131-36	G536A					
48"	5/8"	TP-GC-581212MM-48	C-GC-581212MM-48	30-3131-48	D-30-3131-48	G548A					
60"	5/8"	TP-GC-581212MM-60	C-GC-581212MM-60	30-3131-60		G560A					
18"	1"	TP-GC-103434MM-18	C-GC-103434MM-18	40-4141-18		G818E					
24"	1/2"	TP-GC-121212MF-24V	C-GC-121212MF-24V	20-3135-24	20-3135-24	G424V1					
36"	1/2"	TP-GC-121212MF-36V	C-GC-121212MF-36V	20-3135-36	20-3135-36	G436V1					
18"	5/8"	TP-GC-581212MF-18V	C-GC-581212MF-18V	30-3135-18		G518V1					
24"	5/8"	TP-GC-581212MF-24V	C-GC-581212MF-24V	30-3135-24		G524V1					
36"	5/8"	TP-GC-581212MF-36V	C-GC-581212MF-36V	30-3135-36		G536V1					
24"	5/8"	TP-CG-581234MF-24V	C-CG-581234MF-24V	30-3145-24		G524V7					
30"	5/8"	TP-CG-581234MF-30V	C-CG-581234MF-30V	30-3145-30		G530V1					
36"	5/8"	TP-GC-581234MF-36V	C-GC-581234MF-36V	30-3145-36		G536C7					
18"	5/8"	TP-GC-KIT-18	200046								
24"	5/8"	TP-GC-KIT-24	200045								
36"	5/8"	TP-GC-KIT-36	200044								
SIZE		TRADEPRO									
1/2" FIP x 1/2" FIP		TP-GC-1212FF-V	C-GC-1212FF-V	92-3232	92-3232	GV4F4F					
3/4" FIP x 3/4" FIP		TP-GC-3434FF-V	C-GC-3434FF-V	92-4242	92-4242	GV6F6F					

Cambridge, Dormont, Diversitech, and Crown Industries, are trademarks of their respective owners.

Reasonable effort has been made to assure the accuracy of cross-reference information. However, final evaluation for suitable replacement is left to the installer.