



FOR INDUSTRY PROFESSIONALS



# TP-V5-USA 5 CFM DEEP VACUUM PUMP

## Technical Support

Contact the Sales Center from where the product was purchased for technical support.

**Acme Refrigeration**  
[www.acmeref.com](http://www.acmeref.com)  
(800) 324-1258

**Baker**  
[www.bakerdist.com](http://www.bakerdist.com)  
(844) 289-0033

**CE USA**  
[www.carrierenterprise.com](http://www.carrierenterprise.com)

**DASCO Supply**  
[www.dascosupply.com](http://www.dascosupply.com)

**East Coast Metals**  
[www.ecmdi.com](http://www.ecmdi.com)

**Gemaire**  
[www.gemaire.com](http://www.gemaire.com)  
(888) 601-0038

**Homans Associates**  
[www.homans.com](http://www.homans.com)

**N&S Supply**  
[www.nssupply.com](http://www.nssupply.com)  
(845) 896-6291

**Peirce Phelps**  
[www.peirce.com](http://www.peirce.com)  
(800) 324-2304

**TEC**  
[www.tecmungo.com](http://www.tecmungo.com)  
(708) 418-7900

# TP-V5-USA

## FEATURES

- 2-Stage direct drive
- 5 CFM; High performance 1/2 HP, 60 Hz motor
- Easy access 1/4" or 3/8" intake tee
- 25 micron vacuum rating
- All metal construction with burnished cover, brass fittings and stainless steel valving
- Ergonomic 1/2" break resistant exhaust handle
- Large, easy-to-see oil level sight glass with easy access oil fill located on cover
- O-ring sealed drain valve
- Tethered safety cap to prevent oil spills
- Field repairable



# Specifications

Models 5 CFM 

**MOTOR**

1/2 HP, 60 Hz, 1725 RPM; Capacitor start; Automatic thermal overload protected.

**INTAKE PORTS**

1/4" x 3/8" Male Flare

**FREE AIR DISPLACEMENT**

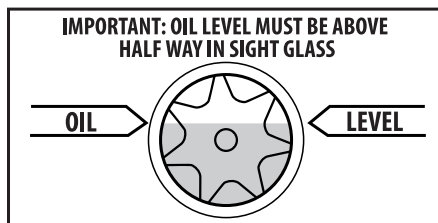
CFM	Liter Per Minute
5	142

**NOTE: The TradePro™ TP-V5-USA is not to be used on Ammonia or Lithium Bromide (salt water) systems. Pump maintenance is the responsibility of the owner.**

The *TradePro™* vacuum pump has been factory tested to guarantee 25 micron or better and listed CFM performance. The serial number has been recorded. Complete and mail the Warranty Registration Card within 10 days of purchase to validate your warranty.

25,400 Microns = 1"

**IMPORTANT**  
**This unit has been drained for shipment.**  
**DO NOT ATTEMPT**  
**TO OPERATE WITHOUT ADDING OIL.**



In order to make the best use of your investment, familiarize yourself with the new features and operating instructions before starting the pump. With just routine care your *TradePro™ vacuum pump* will give you years of reliable service by following proper maintenance guidelines.

**TradePro™ USA vacuum pumps are designed for deep vacuum work in Air Conditioning and Refrigeration Systems.**

**IMPORTANT:** Use oil specifically refined for deep vacuum pumps. Using oil not refined for deep vacuum pumps and/or operating with contaminated oil will void warranty.

**TROUBLE SHOOTING CHART**

Symptom	Possible Cause(s)	Corrective Action
Pump won't start.	<ol style="list-style-type: none"> <li>1. Power cord not plugged in securely.</li> <li>2. Motor switch not on.</li> <li>3. Pump temp. below 30°F</li> <li>4. Inconsistent line voltage.</li> </ol>	<ol style="list-style-type: none"> <li>1. Plug power cord in securely.</li> <li>2. Turn motor switch to ON position.</li> <li>3. Warm up pump to 30°F &amp; turn motor switch on</li> <li>4. Line voltage must be within 10% of 115 volt.</li> </ol>
Pump won't pull deep vacuum.	<ol style="list-style-type: none"> <li>1. Contaminated oil.</li> <li>2. Oil level too low.</li> <li>3. Air leak in system being evacuated.</li> <li>4. Pump inlet fittings missing or not tightened.</li> <li>5. Coupler slipping</li> </ol>	<ol style="list-style-type: none"> <li>1. Change oil.</li> <li>2. Add oil.</li> <li>3. Locate &amp; repair leaks.</li> <li>4. Clean or replace O-ring</li> <li>5. Tighten coupler setscrews to flats of cartridge and motor.</li> </ol>
Oil drips from point where shaft enters the pump housing.	Damaged oil seal.	Replace.
Pump shuts down and will not start.	Thermal overload may be open.	Disconnect pump from system. Wait about 15 minutes for motor to cool and turn it on again. If it cycles off again, return pump to factory for repair.
Pump cycles on and off from a completely cold start and then runs smoothly.	Oil backed up into cartridge and was being cleared out. Pump has not been shutdown properly.	<ol style="list-style-type: none"> <li>1. Remove 1/4" cap.</li> <li>2. Turn pump on.</li> </ol>

**MOTOR**

Pump and oil must be above 30°F. Line voltage must be equal to motor nameplate ±10%. Normal operating temperature is approximately 160°F, which is hot to the touch. Line voltage and ambient conditions will affect this somewhat. Motor has automatic resetting thermal overload protection. **The TradePro™ vacuum pump** is designed for continuous duty and will run for extended periods without overheating.